

INTRODUCTION

FieldChart for Windows® supports communication and management of data collected by **FieldLogger** and other devices from **NOVUS**, such as controllers and indicators.

Easy to use, no previous training is required. It transfers data to the computer, plotting on-line and recording data. It features zoom, table view, charts overlap, printing and table data export to spreadsheets or text editors. When "online" it communicates with up to 8 **FieldLogger** units or 64 controllers or indicators, thus making possible to monitor and plot up to 64 channels of analog variables. High and Low alarms can be assigned to each channel.



SYSTEM REQUIREMENTS

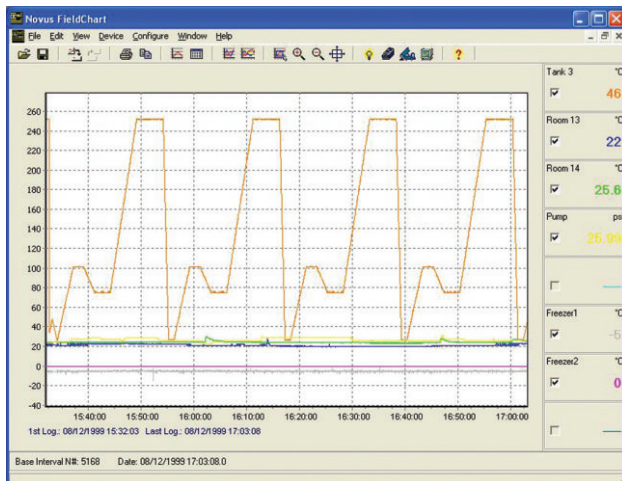


- Windows® 98SE or higher.
 - Processor: Pentium III 500MHz;
 - Free disk space: 100MB;
 - RAM: 128MB (256MB recommended);
 - Serial communication port or USB.
- Modbus RTU slave communication devices.
- RS232/RS485 or USB/RS485 converter.
- **FieldChart** registration number, associated to the serial number of a **NOVUS** device connected to the Modbus network.

FEATURES

- Channel data is presented as chart and digital display
- Online monitoring of data in the Modbus network.
- Up to 8 channels per chart.
- Data recorder: samples of each channel are stored in disk at programmable intervals.
- Stored data displayed as chart or data table.
- Exports stored data in XLS and TXT formats.
- 8 channels version: 1 chart display. Enables to display up to 8 channels of 1 **FieldLogger** or of 8 variables in different **NOVUS** devices.
- 64 channels version: Display up to 8 charts. Enables to display up to 8 channels of 8 **FieldLoggers** or of 64 variables in different **NOVUS** devices.
- Communication protocol: Modbus RTU Master. Enables reading operations in **NOVUS** devices connected to the Modbus network.
- Communication Interface; Single serial port, selectable from 1200 to 57600 bps.
- **FieldLogger** data download: can transfer batch of data from **FieldLogger** memory to PC files.
- Includes a menu option to start **FieldLogger** configurator software.
- Individual supervision of alarms for each monitored variable, with visual and audible warning.
- Chart handling: Zoom, merge and overlap.

EXAMPLES OF CONFIGURATION AND MONITORING SCREENS



Network Devices

ID	Address	Device	Label
1	1	FieldLogger	FL_01
2	2	N322_RHT	N322RHT
3	3	N1100	N110
4	4	N1500	N1500
5	5	FieldLogger	FL2

Pin Configuration

Device	Name	Parameter	Tag	Unit	Dec
Pen 1	N322_RHT	N322RHT	PV RH	Rum	1
Pen 2	N322_RHT	N322RHT	PV	Tem	0
Pen 3	FieldLogger	FL1	Canal 1		
Pen 4	FieldLogger	FL1	Canal 3		
Pen 5	FieldLogger	FL1	Canal 5		
Pen 6	N1100	N110	PV		
Pen 7	N1100	N110	SV		
Pen 8	N1100	N110	MV		

Constants

Constant	Value	Tag	Unit
High	100	Canal 1	
Low	0	Canal 2	

Data List

ID	Date	Time	Canal 1	Canal 2	Canal 3	Alm 1
1	18/02/2008	08:27:39.6	20	30	20	0
2	18/02/2008	08:27:43.6	20	30	20	0
3	18/02/2008	08:27:45.6	20	30	20	0
4	18/02/2008	08:27:46.6	20	30	20	0
5	18/02/2008	08:27:48.1	20	30	20	0
6	18/02/2008	08:27:50.1	20	30	20	0
7	18/02/2008	08:27:52.1	20	30	20	0
8	18/02/2008	08:27:54.1	20	30	20	0
9	18/02/2008	08:27:56.1	20	30	20	0
10	18/02/2008	08:27:58.1	20	30	20	0
11	18/02/2008	08:28:00.1	20	30	20	0
12	18/02/2008	08:28:02.1	20	30	20	0
13	18/02/2008	08:28:04.1	20	30	20	0
14	18/02/2008	08:28:06.1	20	30	20	0
15	18/02/2008	08:28:08.1	20	30	20	0
16	18/02/2008	08:28:10.1	20	30	20	0

Pen Configuration

Pen Enable Color: [Orange]

Dot Line Width: 1

Sound [Speaker icon]

Low Alarm: 0

Hi Alarm: 0

Recognize Alarms

OK Cancel