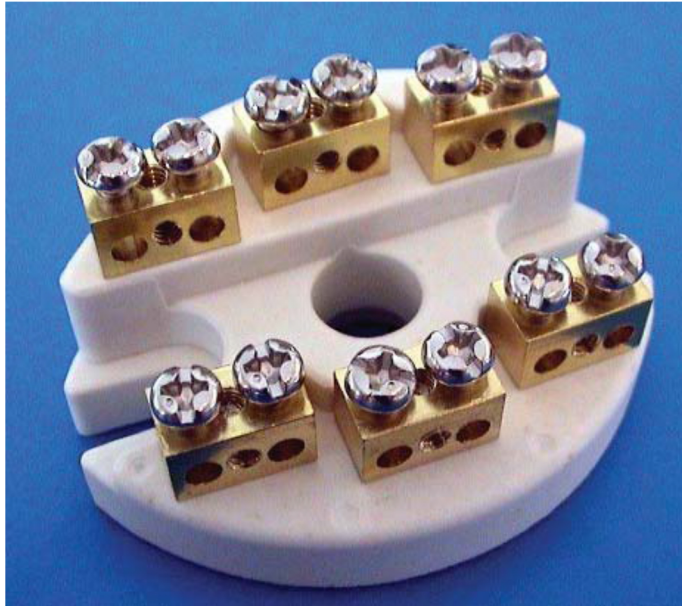


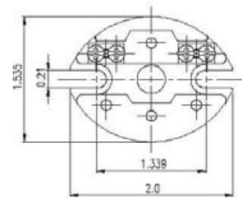
Terminal Blocks: Standard Elliptical



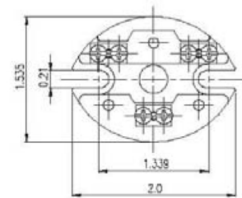
TB SERIES: STANDARD ELLIPTICAL

Part No.	Description
TB-2P-C	2 Pole w/ center hole
TB-3P-C	3 Pole w/ center hole
TB-4P-C	4 Pole w/ center hole
TB-6P-C	6 Pole w/ center hole

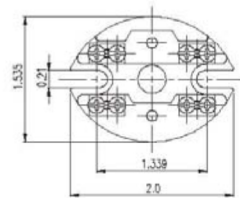
- Material: Al_2O_3 45%. Stronger than ceramic: resistant to cracking and flaking.
- Suits most popular heads from other manufacturers.
- 2, 3, 4 & 6 pole w/ center hole



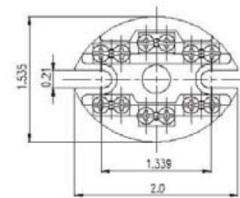
TB-2PC



TB-3PC



TB-4PC

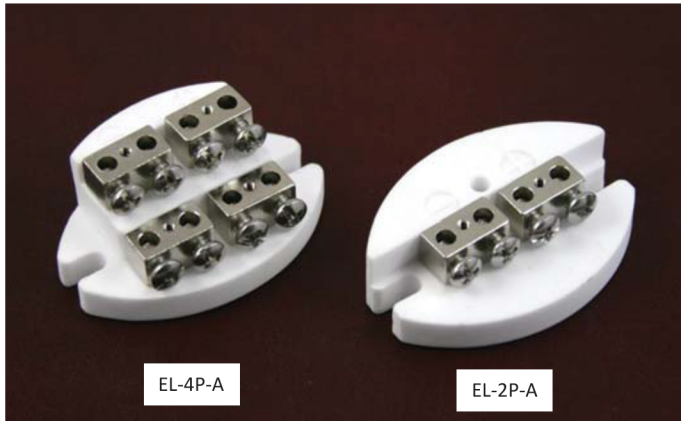


TB-6PC



To suit Connection Heads: XDA, XDS, CMS, KNE, BUZ, BUZW, KNPL, CSS, CCI, KNN & KPP

Terminal Blocks: Standard Elliptical for heavy duty wire



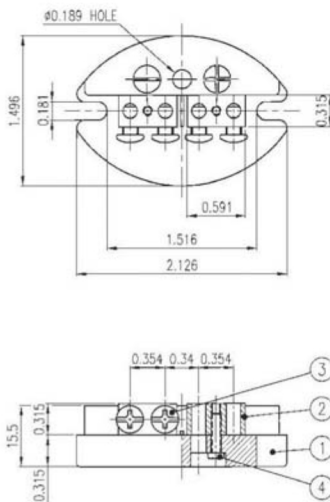
EL & TB-200 SERIES: STANDARD ELLIPTICAL

Part No.	Description
EL-2P-A	2 Pole
EL-4P-A	4 Pole
TB-200-A	4 Pole w/ center hole

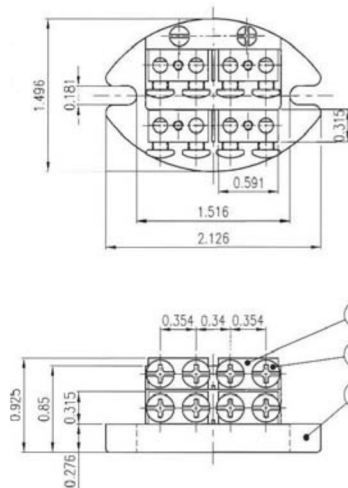
- Material: Al_2O_3 95%. Stronger than ceramic: resistant to cracking and flaking.
- Suits most popular heads from other manufacturers.
- Suitable for #22 - #8 AWG



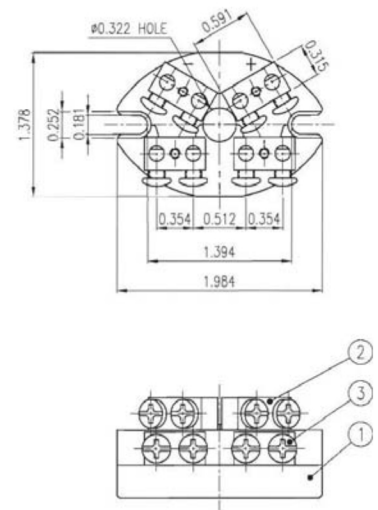
TB-200-A



EL-2P-A



EL-4P-A



TB-200-A

To suit Connection Heads: CMS, CSS, & CCI

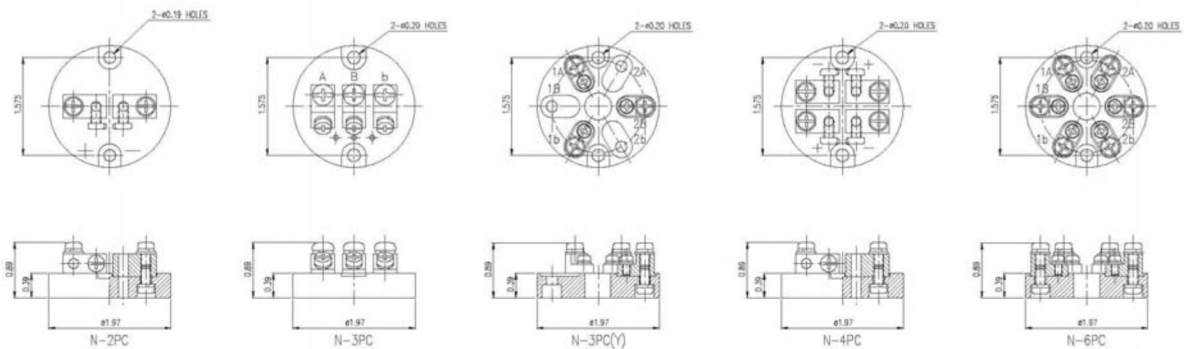
Terminal Blocks: Standard Round



N SERIES: STANDARD ELLIPTICAL

Part No.	Description
N-2P-C	2 Pole
N-3PY-C	3 Pole w/ center hole
N-4P-C	4 Pole
N-6P-C	6 Pole w/ center hole

- Material: Al_2O_3 45%. Stronger than ceramic: resistant to cracking and flaking.
- Also available in Bakelite, e.g. N-2P-B
- 2, 3, 4 & 6 pole



To suit Connection Heads: XDA, XDS, CMS, KNE, BUZ, BUZW, KNPL, CSS, CLS, CCI, KNN, CPP & KPP

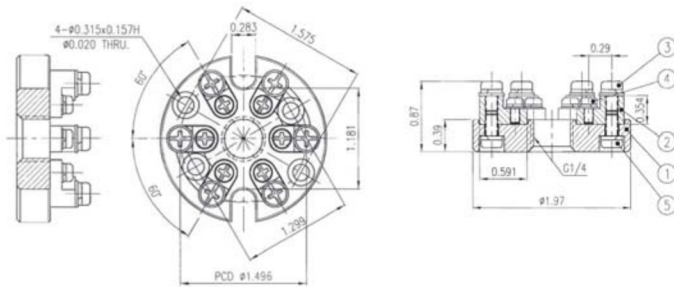
Terminal Blocks: Standard Round w/ Self Gripping Spring



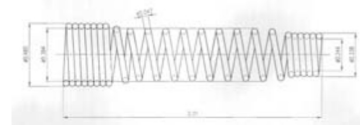
NT SERIES: STANDARD ROUND w/ SPRING

Part No.	Description
NT-2P-A	2 Pole w/ center hole & spring
NT-3P-A	3 Pole w/ center hole & spring
NT-4P-A	4 Pole w/ center hole & spring
NT-6P-A	6 Pole w/ center hole & spring

- Material: Al_2O_3 92%. Stronger than ceramic: resistant to cracking and flaking.
- Supplied w/ self gripping spring for 1/4" OD probe for spring loaded assembly. Spring threads into center hole
- Suits most popular heads from other manufacturers.



No.	Part Name	Material	Q'Ty	Remarks
1	Terminal Block	Al ₂ O ₃ 92%	1	
2	Terminal	Brass+Ni	6	
3	CRPH Screw + W. SW	SS302+SS304	6	M4x0.28L
4	CRPH Screw + W. SW	SS302+SS304	6	M3x0.24L
5	CRPH Screw + SW	SS302+SS304	6	M4x0.32L



To suit Connection Heads: XDA, XDS, CMS, KNE, BUZ, BUZW, KNPL, CSS, CCI, KNN & KPP

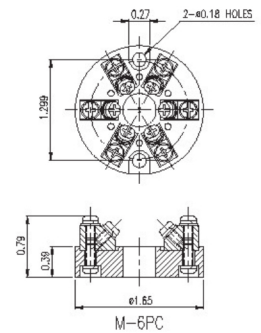
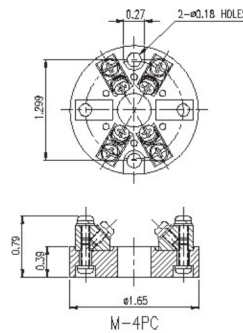
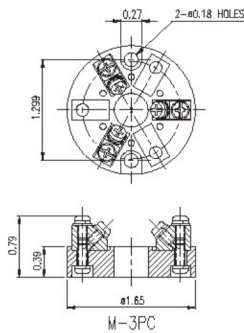
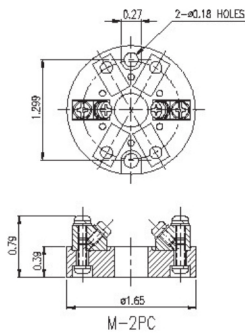
Terminal Blocks: Medium Round



M SERIES: MEDIUM ROUND

Part No.	Description
M-2P-C	2 Pole w/ center hole
M-3P-C	3 Pole w/ center hole
M-4P-C	4 Pole w/ center hole
M-6P-C	6 Pole w/ center hole

- Material: Al_2O_3 45%. Stronger than ceramic: resistant to cracking and flaking.
- DIN Size: 33mm fixing holes
- Also available in black bakelite
- Suits most popular heads from other manufacturers.



To suit Connection Heads: XDA, XDS, CMS, KNE, BUZ, BUZW, KNPL, CSS, CLS, RSS, CCI, KPP, CPP & KNN

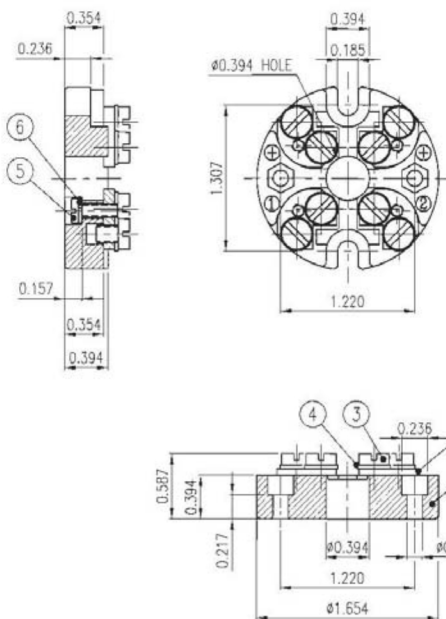
Terminal Blocks: Medium Round



TN SERIES: MEDIUM ROUND

Part No.	Description
TN-4P-A	4 Pole w/ center hole

- Material: Al_2O_3 95%. Stronger than ceramic: resistant to cracking and flaking.
- DIN Size: 33mm fixing holes
- Suits most popular heads from other manufacturers.



Model : TN-4P-A

No.	Part Name	Material	Q'TY	Remarks
1	Terminal Block	Ceramic Al_2O_3 95%	1	
2	Terminal	Brass	4	0.10t
3	CRPH Screw	Brass	8	M4x0.2L
4	Washer	Brass	8	$\phi 0.299 \times \phi 0.16 \times 0.03t$
5	CRPH Screw	SS304	4	M3x0.35L
6	Spring Washer	SS304	4	$\phi 0.228 \times \phi 0.12 \times 0.03t$



To suit Connection Heads: XDA, XDS, CMS, KNE, BUZ, BUZW, KNPL, CSS, CLS, RSS, CCI, KPP, CPP & KNN

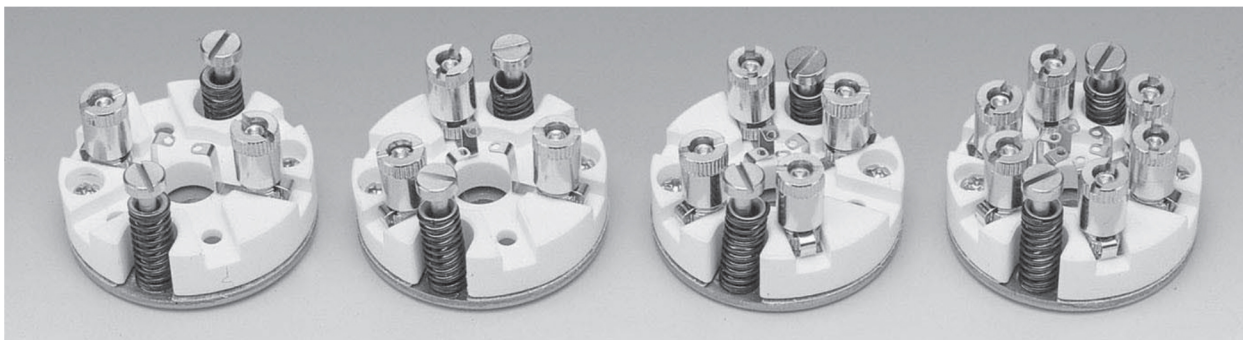
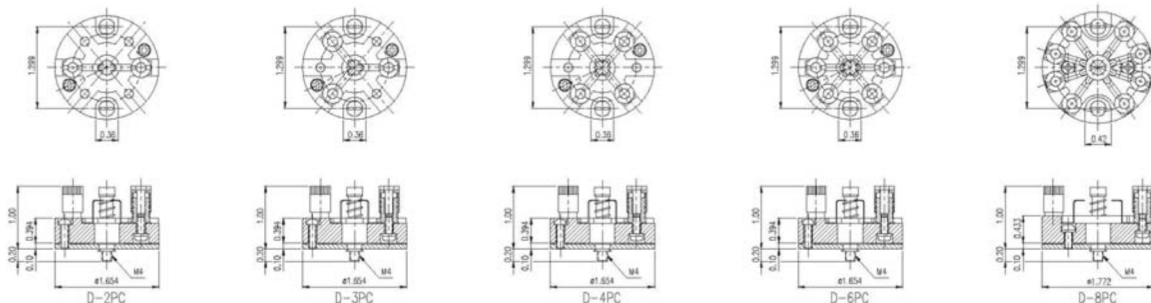
Terminal Blocks: Medium Round Spring Loaded



D SERIES: MEDIUM SPRING LOADED

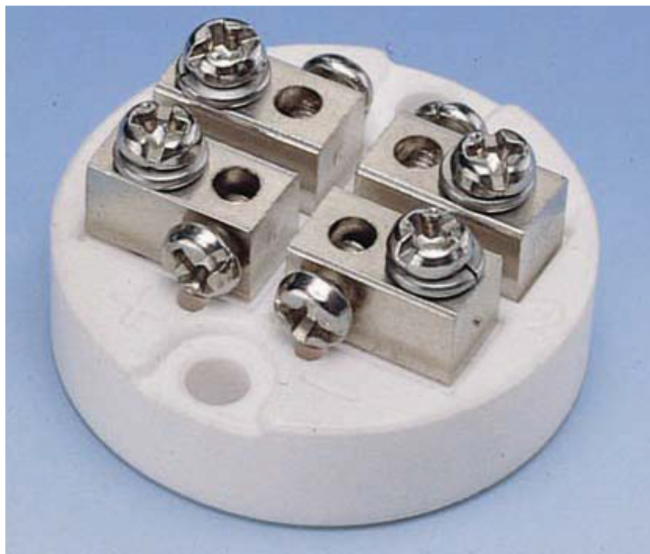
Part No.	Description
D-2P-C	2 Pole w/ center hole
D-3P-C	3 Pole w/ center hole
D-4P-C	4 Pole w/ center hole
D-6P-C	6 Pole w/ center hole
D-8P-C	8 Pole w/ center hole

- Material: Al_2O_3 45%. Stronger than ceramic, resistant to cracking and flaking.
- DIN Size: 33mm fixing holes
- 2, 3, 4, 6 & 8 pole w/ center hole
- Also available in bakelite



To suit Connection Heads: XDA, XDS, KNE, BUZ, BUZW, KNPL, CLS, RSS, CPP, KPP & KNN

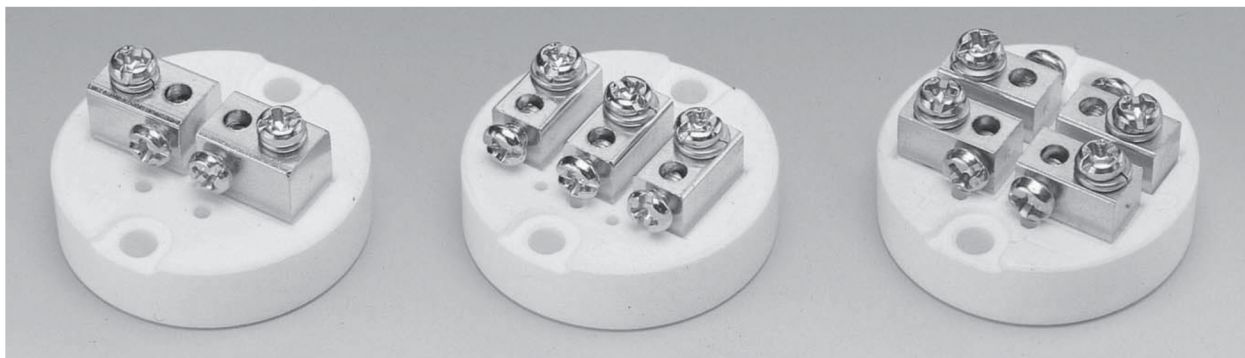
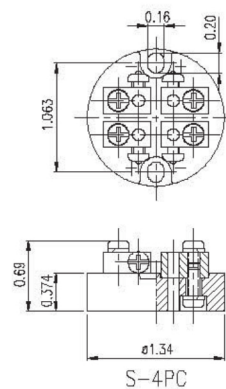
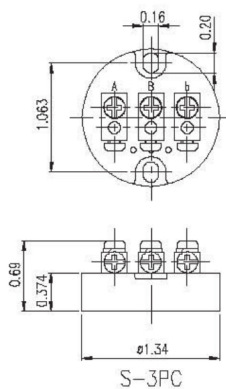
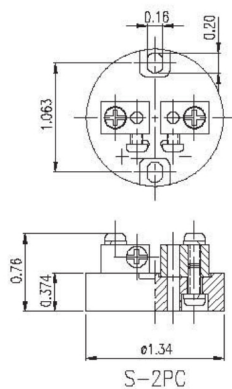
Terminal Blocks: Small



S SERIES: SMALL

Part No.	Description
S-2P-C	2 Pole
S-3P-C	3 Pole
S-4P-C	4 Pole

- Material: Al_2O_3 45%. Stronger than ceramic, resistant to cracking and flaking.
- Only suits KSE head (page 6)
- 2, 3 & 4 pole
- Also available in bakelite



To suit Connection Heads: KSE

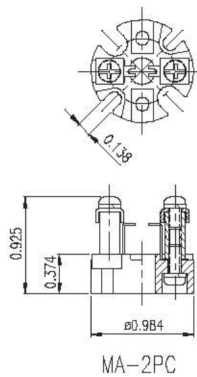
Terminal Blocks: Mini



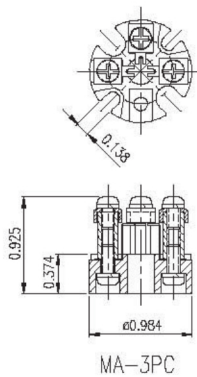
MA SERIES: MINI

Part No.	Description
MA-2P-C	2 Pole
MA-3P-C	3 Pole
MA-4P-C	4 Pole

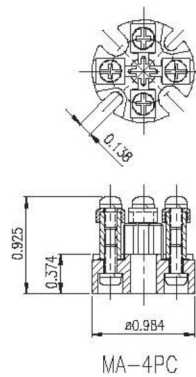
- Material: Al_2O_3 45%. Stronger than ceramic, resistant to cracking and flaking.
- Only suits MA head (page 6)



MA-2PC



MA-3PC



MA-4PC



To suit Connection Heads: MA