

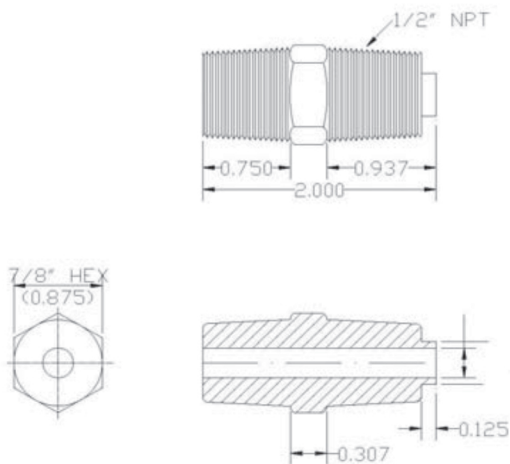
Hex Weld Nipples: Standard & Spring Loaded



- Standard & Spring Loaded
- All NPT threads cut on CNC turning centers
- 1/2" Fittings: 7/8" Solid Hex
- Material SS316
- 1/4" & 1/2" NPT Male Threads
- Against the standard +/- 1/2 thread gauging standard, we maintain a +/- 1/4 thread standard
- Bores are reamed to ensure accurate sizes

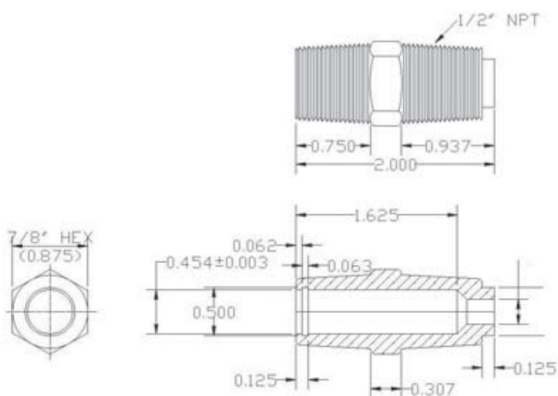


NSP1212-14 & NSPS-14 Spring



HEX FITTINGS WITH WELDING LIP

Part #	Thread Size	To suit probe OD
N1212-18	1/2" x 1/2" NPT	1/8"
N1212-36	1/2" x 1/2" NPT	3/16"
N1212-14	1/2" x 1/2" NPT	1/4"
N1212-38	1/2" x 1/2" NPT	3/8"
N1414-36	1/4" x 1/4" NPT	3/16"
N1414-14	1/4" x 1/4" NPT	1/4"



SPRING LOADED HEX FITTINGS

Part #	Thread Size	To suit probe OD
NSP1212-18	1/2" x 1/2" NPT	1/8"
NSPS-18	Spring for NSP1212-18	1/8"
NSP1212-36	1/2" x 1/2" NPT	3/16"
NSPS-36	Spring for NSP1212-36	3/16"
NSP1212-14	1/2" x 1/2" NPT	1/4"
NSPS-14	Spring for NSP1212-14	1/4"
NSP1212-38	1/2" x 1/2" NPT	3/8"
NSPS-38	Spring for NSP1212-38	3/8"

Hex Weld Nipples: Spring Loaded w/ Oil Seal



OIL SEAL HEX WELD FITTINGS

Part #	Thread Size	To suit probe OD
NNTS1212-14	1/2" x 1/2" NPT	1/4"
NNTS1212-36	1/2" x 1/2" NPT	3/16"

- Fitted with rubber o-ring for oil seal
- All NPT threads cut on CNC turning centers
- 1/2" Fittings: 7/8" Solid Hex
- Material SS316
- 1/2" NPT for 1/4" OD probe
- Against the standard +/- 1/2 thread gauging standard, we maintain a +/- 1/4 thread standard
- Bores are reamed to ensure accurate sizes



NOTES

Potting/ Braze Plugs



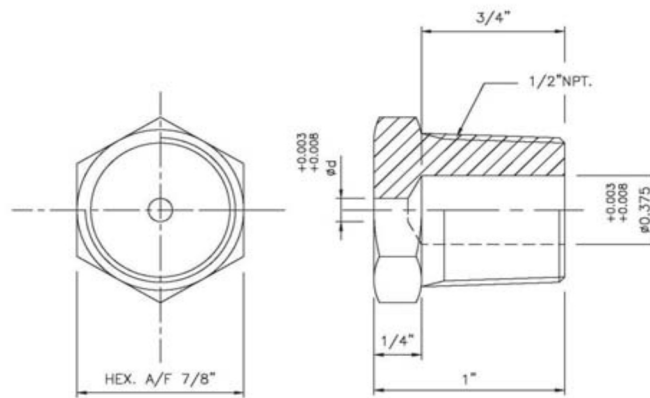
PPB12-14

PP12-14

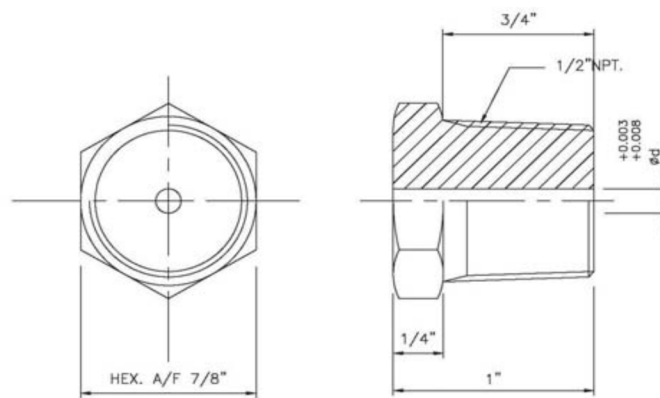
POTTING/ BRAZE PLUGS

Part #	Thread	To suit probe OD	Bore
PPB12-14	1/2"	1/4"	w/ countebore
PP12-14	1/2"	1/4"	Bored straight through

- 1/2" NPT
- To suit 1/4" OD probe
- Material SS304
- CNC Machined for high accuracy threads
- Bores are reamed to ensure accurate sizes
- PPB12-14 w/ counterbore: can be potted internally or brazed
- PP12-14: bored straight through
- Other sizes/ configurations available to order



PPB12-14



PP12-14